

# IntelViewer for PCs

## Installation and Login Guide

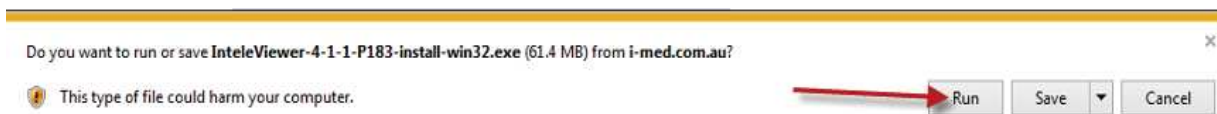
### Installation

#### 1. Select **Download IntelViewer for PC**

IntelViewer will require installation on your device.  
Please click on the appropriate option below for installation.

- > Download IntelViewer for PC
- > Download IntelViewer for MAC

#### 2. Click **Run**



The 60mb application and will download within a few of minutes

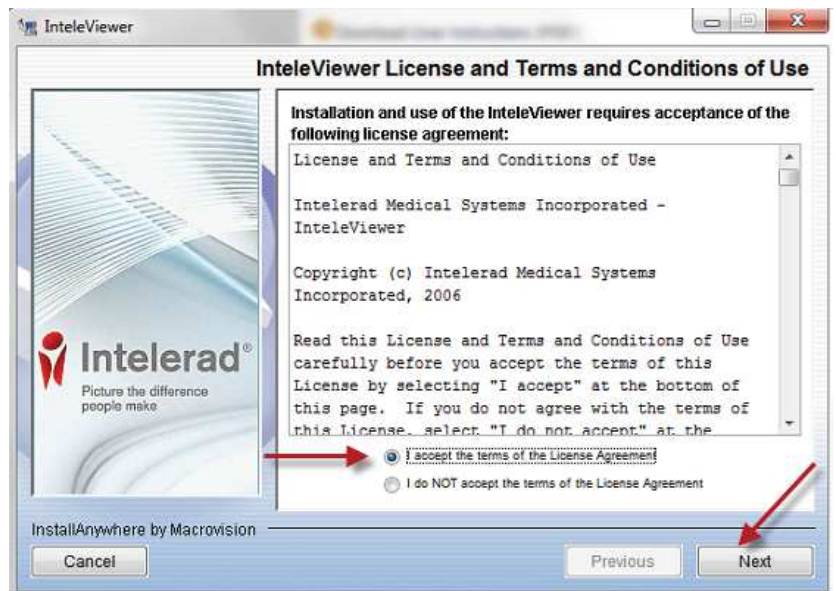


#### 3. Once downloaded the application will run. Select **Yes**

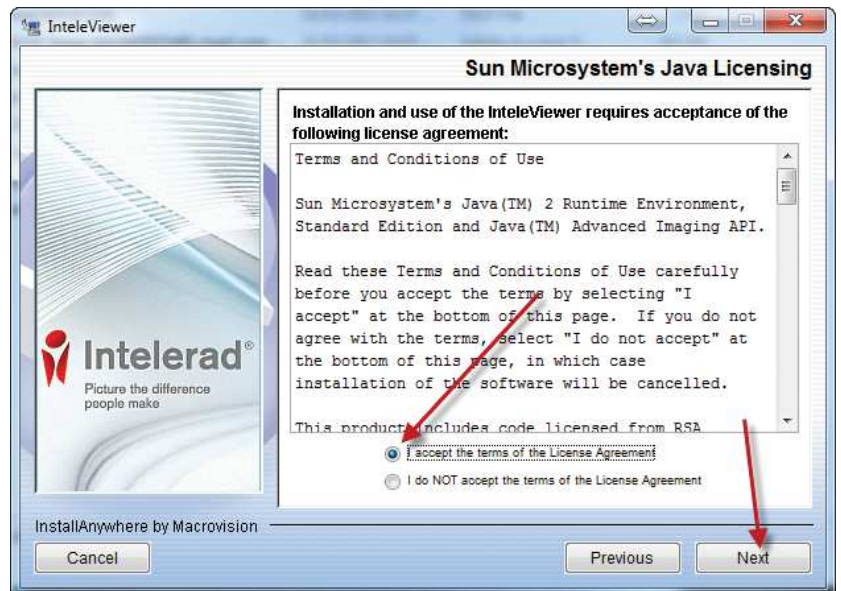


## Installation continued

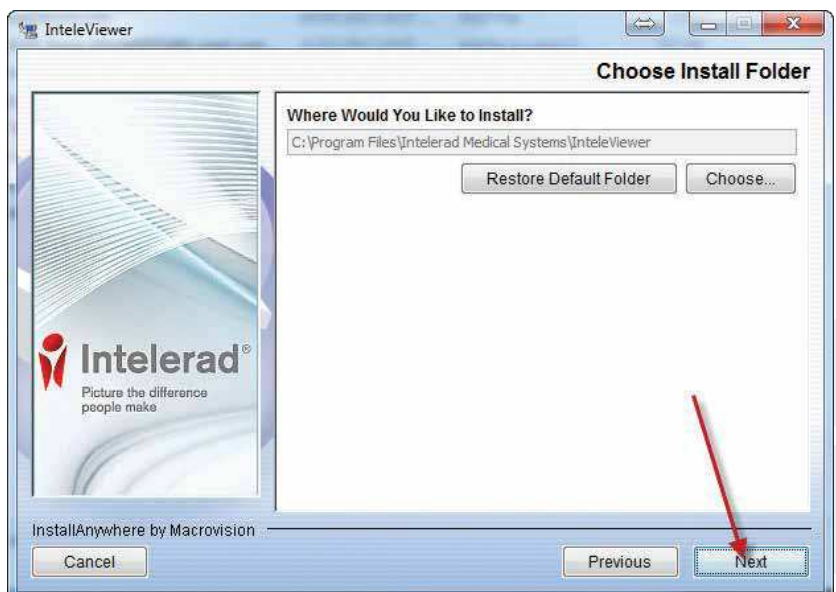
4. Agree to IntelViewer terms of service  
Click **Next**



5. You will be prompted to accept the Sun, Java License Terms  
**Accept** and click **Next**



6. Install IntelViewer in the default location by clicking **Next**

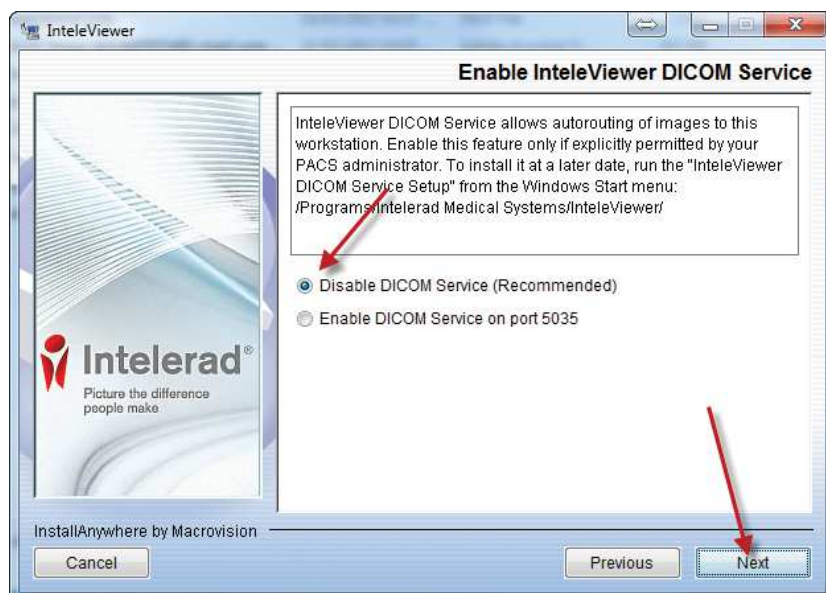


## Installation continued

7. Select **All users** and click **Next**

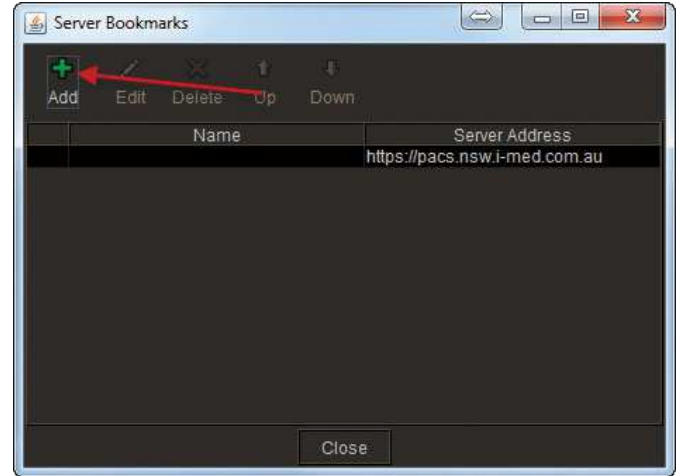
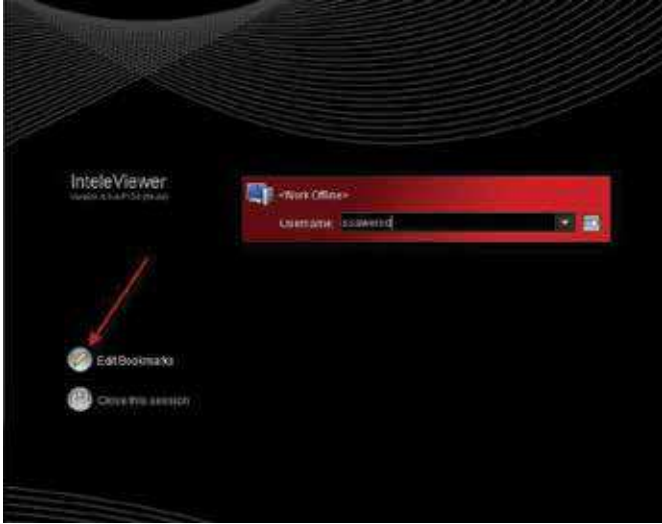


8. Select **Disable DICOM Service** and click **Next**



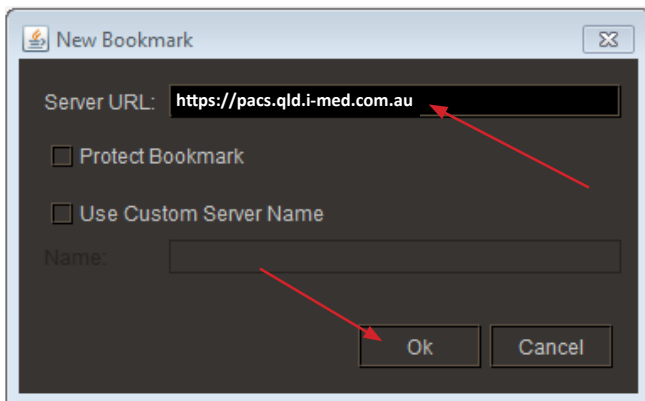
# Logging In

## 1. Open IntelViewer



**Note:** The first time you launch the program you will need to enter a New Server. You will only need to do this once and will not be prompted the next time you log in.

## 2. Enter the PACS server address <https://pacs.qld.i-med.com.au> in the Server URL field



## 3. Enter your username and password in the appropriate fields



IntelViewer will open in the search screen

